

Cooper Standard

E-Z Cruise™

Chevrolet/GMC Kodiak 5500 Transit Bus Evaluation

Global Y & Z Axis Positions (Sway and Bounce)



- Prepared by Rich Bohde
- May 02, 2005



C5500 Bus Evaluation

Objectives

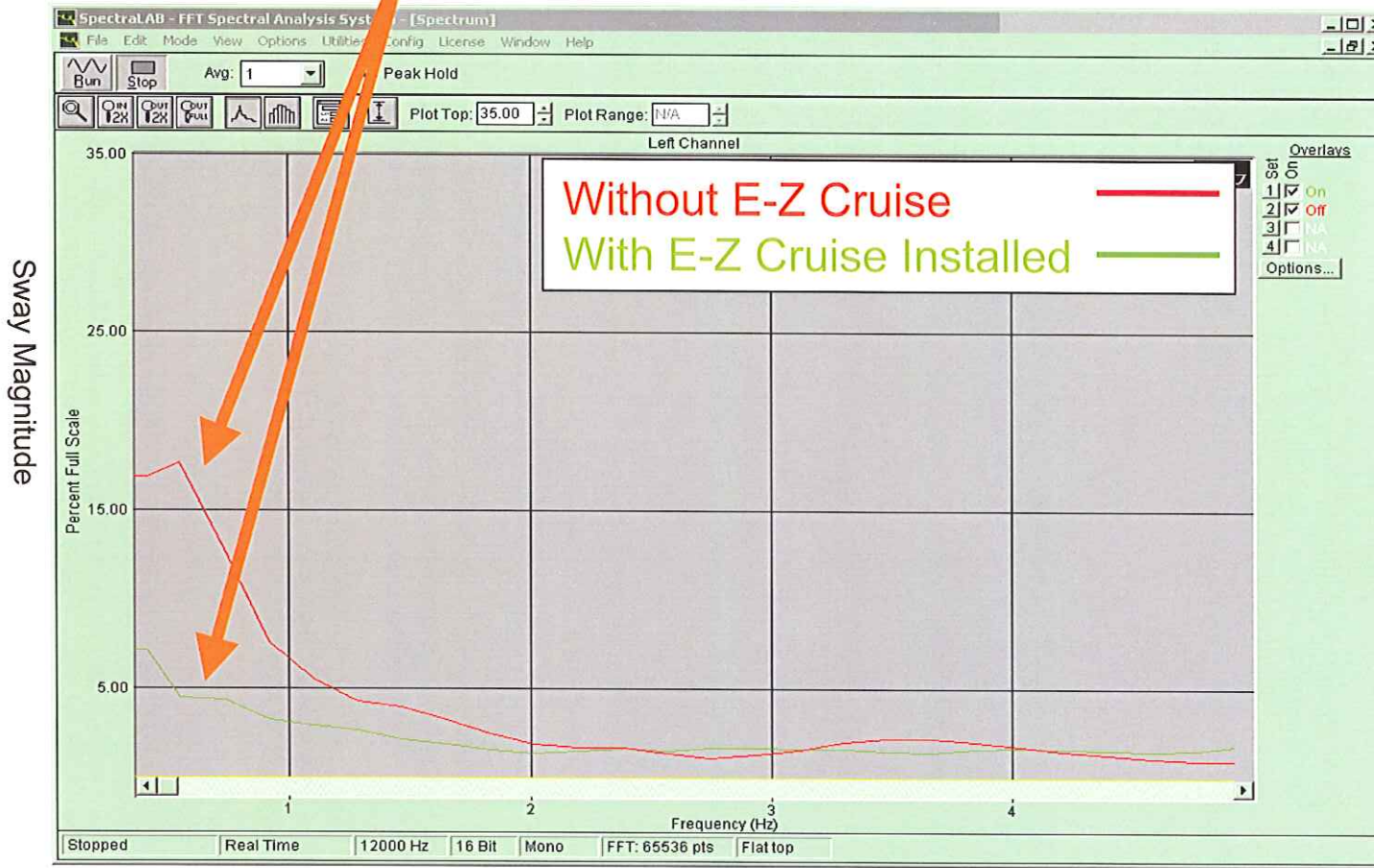
- **Instrument Bus**
- **Measure Sway and Bounce (Low Frequency Lateral and Vertical Motion: 0-2 Hz)**
- **Quantify Sway and Bounce Reduction with E-Z Cruise™ Installed**

Cooper Standard

Highway Driving 55 mph



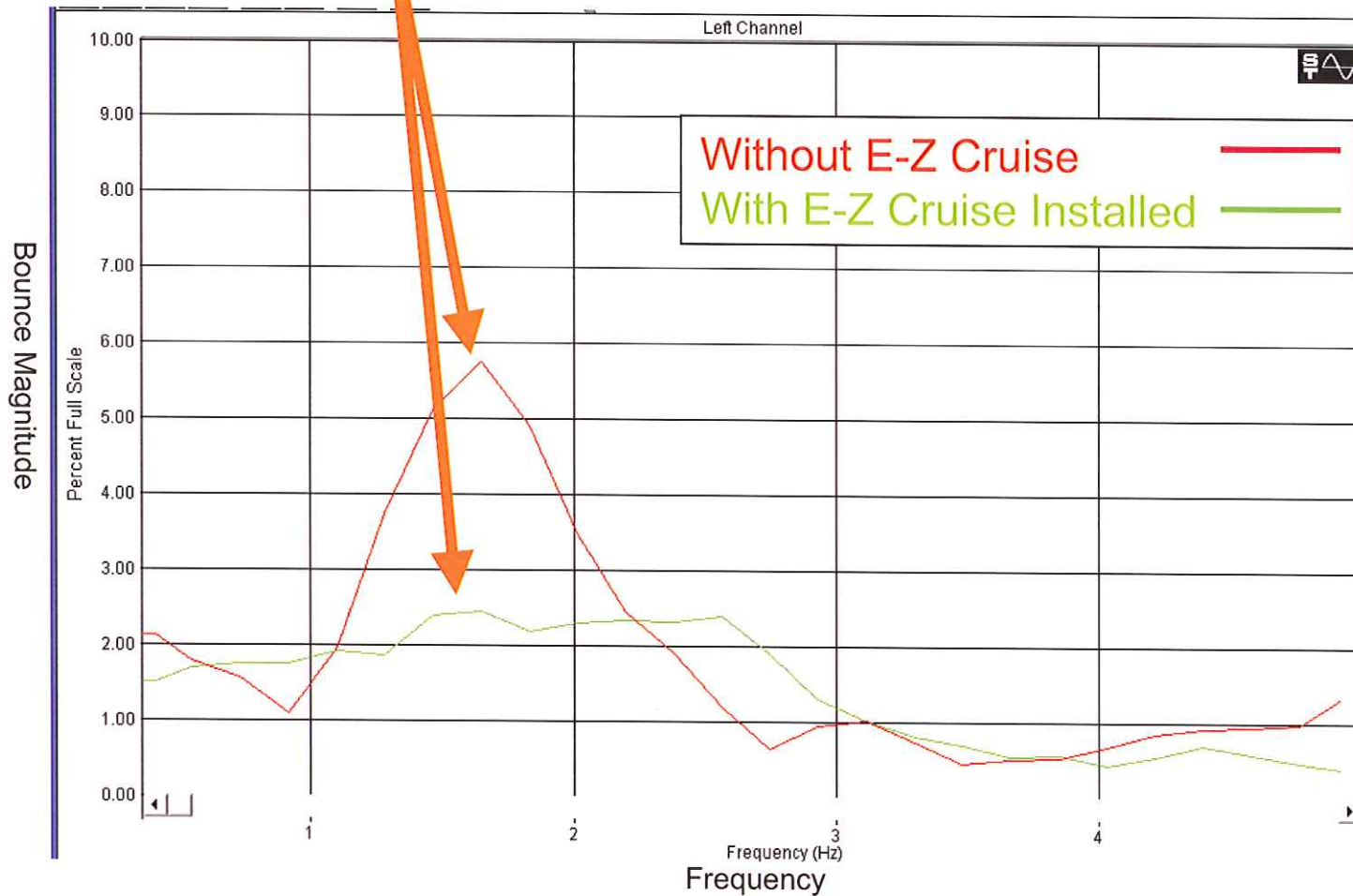
75% Reduction
PEAK Sway MAGNITUDE



Frequency

Highway Driving 55 mph

58% Reduction
PEAK BOUNCE MAGNITUDE



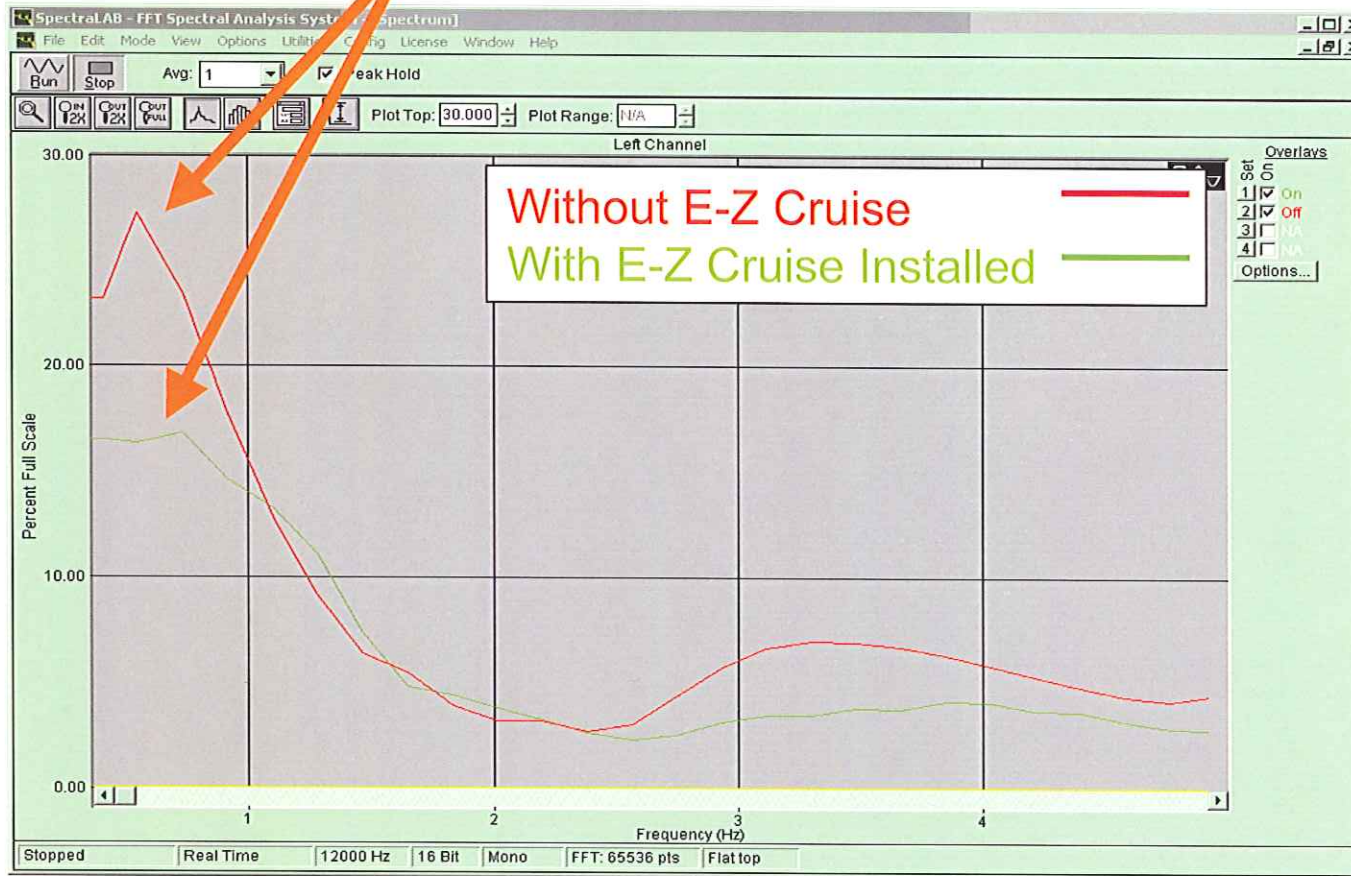
Cooper Standard

Stop, LH Turn, LH Turn,
Cross RR Tracks, Stop



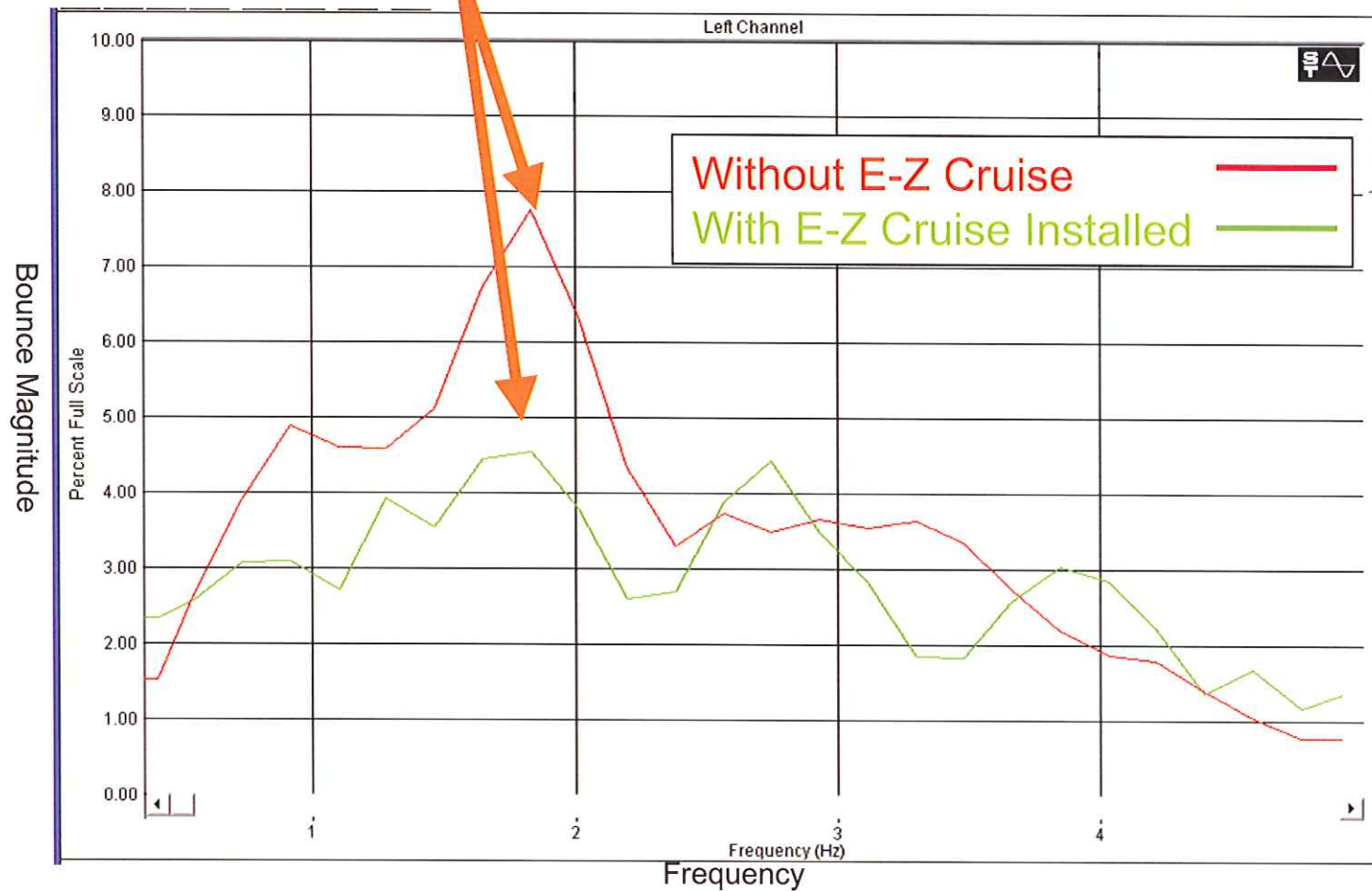
40% Reduction
PEAK Sway MAGNITUDE

Sway Magnitude



Frequency

41% Reduction
PEAK BOUNCE MAGNITUDE



Cooper Standard

Southbound on Chip and Seal



43% Reduction
PEAK Sway MAGNITUDE

